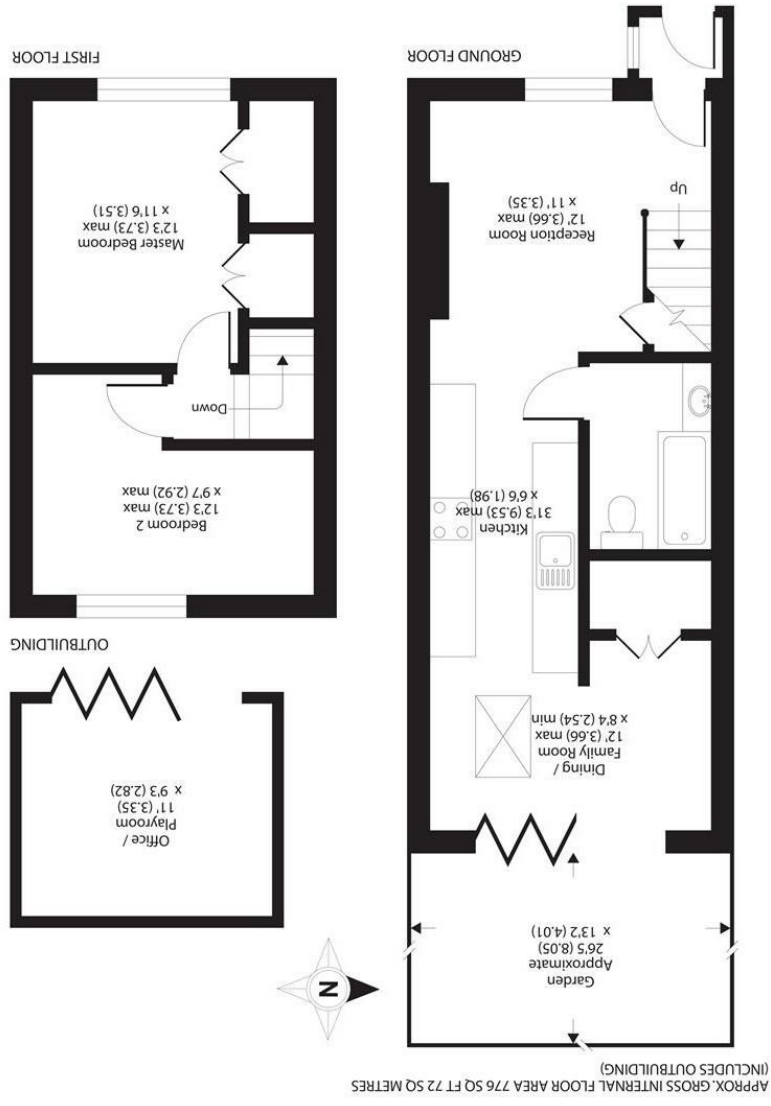
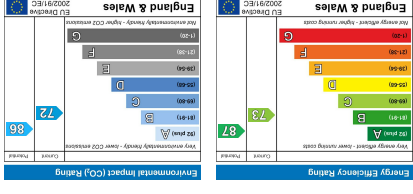


All appliances listed in these details are only 'as seen' and have not been tested by Gibson Lane, nor have we sought certification of warranty or service, unless otherwise stated. Measurements, areas and distances are approximate. Floor plans and photographs are for guidance purposes only and must not be relied upon for any purpose. These details are offered on the understanding that all negotiations are made through this company. Neither these particulars, nor verbal representations, form part of any offer or contract, and their accuracy cannot be guaranteed.



34 Richmond Road
 Kingston upon Thames
 Surrey
 KT2 5ED
 www.gibsonlane.co.uk
 Tel: 020 8546 5444







York Road

Kingston Upon Thames KT2 6JF

£600,000

A beautifully presented two double bedroom cottage situated on this sought after North Kingston Road.

A beautifully presented cottage which has been tastefully extended with exquisite interior offering a practical contemporary style of living. Comprising of a stunning open plan Kitchen/ living/ dining room with bi-fold doors leading onto a delightfully landscaped rear garden and impressive out building, The ground floor is complete with under floor heating, modern family bathroom and utility area. To the upper floor there are two double bedrooms.

Situation

York Road is conveniently positioned between Richmond Park and the River Thames and is ideally situated for both Norbiton and Kingston stations giving direct access into Waterloo. Kingston town centre with its array of shops, restaurants and bars is a short distance away. The standard of schooling in the immediate area is excellent within both the private and state sectors.



Furnishing: null
Local Authority:
Council Tax Band: D